

U40MI/CI-126GS

0.4 MP 1/2.9" Dry Gigabit Ethernet Industrial Area Scan Camera

U40MI/CI-126GS Pratt & Whitney Array Phase machine, equipped with IMX297 global shutter chip, built-in Various image preprocessing functions. Using Gigabit Ethernet network interface, fast real-time transmission of uncompressed data, Frame rate up to 126.5 fps.



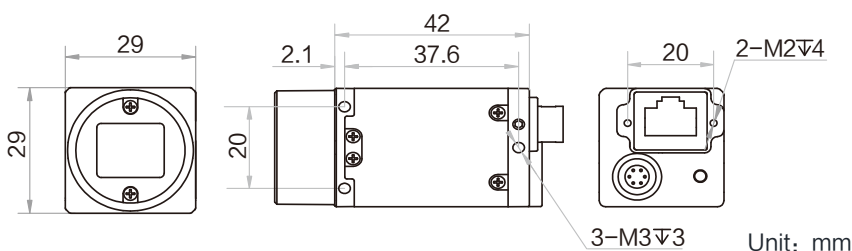
Features:

- Optimized hardware design, stable performance, low power consumption design.
- Support automatic and manual gain, exposure time and other parameter adjustment.
- Support hard trigger, soft trigger and free running mode.
- Gigabit Ethernet interface, the maximum transmission distance can reach 100m without relay.
- Compatible with GigE Vision V2.0 protocol and GenICam standard.

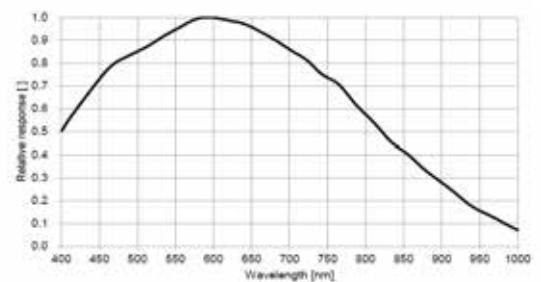
Application industry:

Electronic semiconductor, factory automation, logistics, Codereading, pharmaceutical packaging, etc.

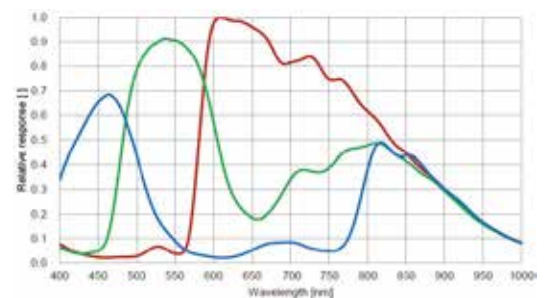
Dimensions:



Sensor:



U40MI-126GS Quantum efficiency



U40CI-126GS Quantum efficiency

Order model:

Black and white camera :
U40MI-126GS
 Color camera :
U40CI-126GS

Technical parameter

Model	U40MI-126GS	U40CI-126GS
parameter	0.4 MP 1/2.9" Dry Gigabit Ethernet Industrial Area Scan Camera	
Performance		
Sensor type	CMOS , Global Shutter	
Sensor model	Sony IMX297	
Cell size	6.9 μm × 6.9 μm	
Target size	1/2.9"	
Resolution	720 × 540	
Maximum frame rate	126.5 fps @720 × 540	
Dynamic Range	74 dB	
Signal to noise ratio	41 dB	
Increase, benefit	0 dB ~ 24 dB	
Exposure time	1 μs ~ 10 sec	
Shutter mode	Support automatic exposure, manual exposure, one-key exposure mode	
B&W	Black and white	Color
Pixel format	Mono 8/10/10Packed/12/12Packed	Bayer RG 8/10/10Packed/12/12Packed
Binning	Support 1 × 1 , 2 × 2 , 4 × 4	
Downsampling	Support 1 × 1 , 2 × 2 , 4 × 4	
Mirror	Support horizontal mirroring, vertical mirroring output	
Electrical Characteristics		
Data interface	Gigabit Ethernet (1000Mbit/s) compatible with Fast Ethernet (100Mbit/s)	
Figure No I/O	The 6-pin P7 connector provides power and I/O: 1 optocoupler isolated input (Line0), 1 optocoupler isolated output (Line1),1 bidirectional configurable non-isolated I/O (Line2)	
Powered by	9 ~ 24VDC , PoE optional	
Typical power consumption	2 W@ 12 VDC	
Structure		
Lens mount	C-Mount	
Dimensions	29 mm × 29 mm × 42 mm	
Weight	About 76 g	
IP protection class	IP30 (when the lens and cable are installed correctly)	
Temperature	Working temperature 0 ~ 50°C, storage temperature -30 ~ 70°C	
Humidity	20%~95% RH non-condensing	
General Specifications		
Software	Supports GigE Vision protocol software	
Operating system	Windows XP/7/10 32/64bits, Linux 32/64 bits and MacOS 64bits	
Protocol/Standard	GigE Vision V2.0, GenICam	
Certification	CE, FCC, RoHS, KC	