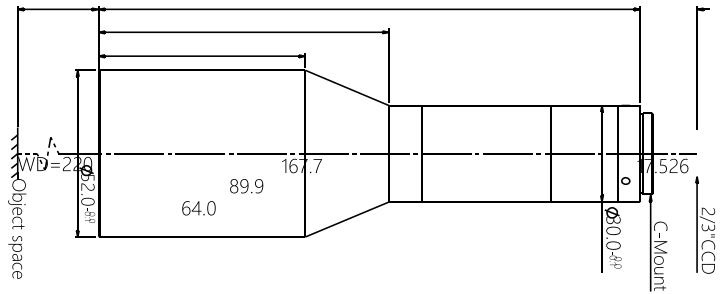


2K03-220-230

Specificatio High-performance object-oriented telecentric lens



2K Series lens features

- Support high-resolution object-oriented telecentric lenses for 5M~20M pixel area scan cameras;
- A variety of low magnification designs to adapt to application scenarios with a larger field of view;
- High definition, low distortion, high telecentric, especially suitable for high-precision AOI and positioning applications;
- Long working distance specifications facilitate lighting and machine component layout;
- Built-in coaxial optical specifications are particularly suitable for wafers, glass devices, and display devices;
- Can be quickly customized to meet different camera specifications, as well as magnification, working distance, and depth of field requirements.

Optical parameters

Magnification $\beta(x)$	0.3
Working distance (mm)	220 \pm 2
CCD size (Φ mm)	11.0(2/3")
F/#	13.6
MTF30 (lp/mm)	>63
Object Depth of Field DoF(mm)	$\pm 6@F13.6$
Image distortion (% max)	<0.1
Telecentricity ($^{\circ}$ max)	<0.1

Mechanical parameters

camera interface	C
Overall lens length (mm)	167.7
Whether the coaxial light	No

Viewable range (mm x mm)

1/1.8" EV76C570 (7.2x5.4)	24.0x18.0
1/1.7" IMX226 (7.5x5.6)	25.0x18.7
2/3" IMX250/264 (8.45x7.1)	28.2x23.7