



IMGPRO-1802

VISION CONTROLLER



One-stop solution to your visual problems



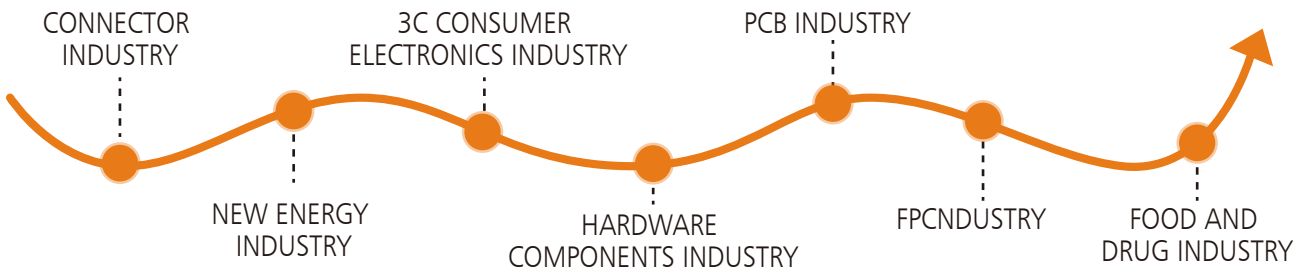
VISION CONTROLLER IMGPRO-1802

IMGPRO-1802 Vision controller adopts fan-less, integrated cooling design, built-in image processing software Advanced Vision Builder(AVB) independently developed by our company. The overall shape design is small and smart, the ultimate performance. Specially developed for machine vision industrial applications, with high stability, low cost, quick response and other characteristics. Applicable to manipulator guidance, tracking, positioning, measurement, identification and other application scenarios.

Functional features:

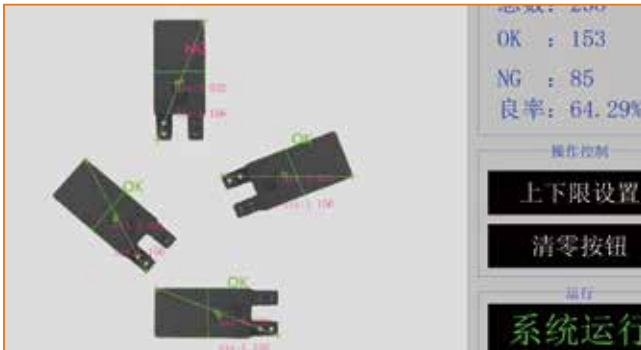
- ◆ 2*DC IN 24V DC power supply, support power reverse connection protection;
- ◆ Support HDMI HD mode, the highest resolution is 1920*1200;
- ◆ It can be equipped with two CCD cameras powered by 5 million POE at the same time;
- ◆ Features One-key Backup and One-key Recovery button;
- ◆ With 4 channels of light source control and 4 channels of camera trigger IO, can realize the trigger control of light source and camera without adding extension module. With 8 in and 8 out I/O module, can realize I/O control function;
- ◆ Contains 1 gigabit communication network port and 1 RS-232 serial port, which can communicate with the host computer through Ethernet or serial port.
- ◆ Built-in image processing software independently developed by our company, including rich image processing functions, can meet the needs of different detection items of customers in various aspects, the software is simple to operate, logic is clear and easy to read, can greatly shorten the development cycle of the project and reduce the investment cost of research and development technicians.

Application field:



Make Vision Easier

Application case:



3C and electronic digital industry is widely used, from the detection, identification, positioning of each component to bar code reading, line number, line color, line sequence and packaging identification and matching, can meet.



The manipulator uses IMGPRO-1802 vision controller's built-in image processing software Advanced Vision Builder(AVB) to quickly carry out product guidance, tracking, positioning, measurement, identification and other applications.

Description of interface definition:

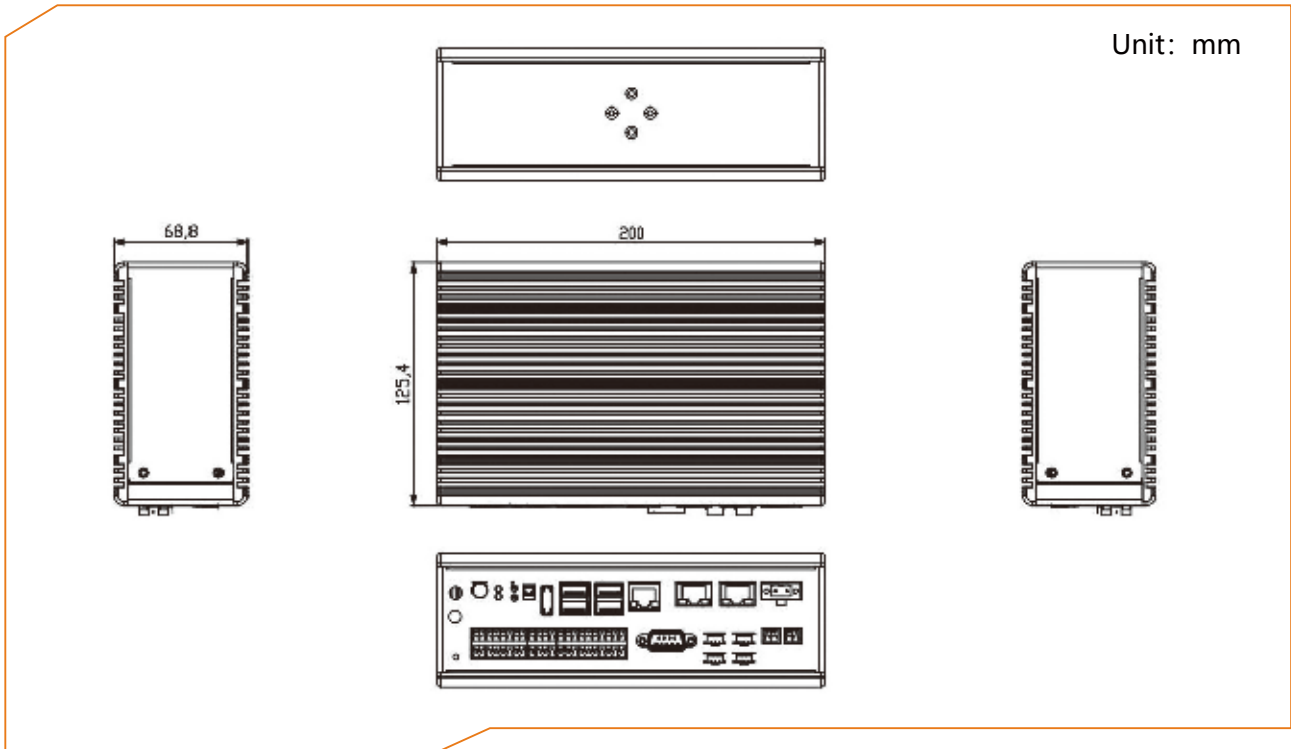


Serial Number	Name	Function	Instructions
1	Backup	A key backup	Tap the switch at 90 degrees
2	Recovery	Ghost	Tap the switch at 90 degrees
3	BRI	Backup restore indicator light	Press the backup and restore button often light, at this time in the backup or restore working state; After the light is off, the backup restoration has been completed
4	HDD	Hard disk working indicator light	The light flashes when the hard disk reads data
5	USB	1*USB2.0, 1*USB3.0	USB dual layer seat
6	USB	2*USB2.0	USB dual layer seat
7	HDMI	HD display interface	HDMI Type A interface
8	LAN	10/100/1000M Network interface	Standard network interface RJ45
9	PoE1	Can power gigabit network port	DC 48V power output
10	PoE2	Can power gigabit network port	DC 48V power output
11	DC IN 24V - +	Power supply interface for the whole machine, 24V	1*2PIN5.08mm pitch Phoenix terminal
12	DC IN 24V	Power supply interface for backup light source, 24V	1*2PIN5.08mm pitch Phoenix terminal
13	DC IN 48V	Power supply interface for backup light source, 48V	1*2PIN5.08mm pitch Phoenix terminal
14	RS-232	2*RS-232	One standard DB-9
15	D08 D18 D07 D17 D06 D16 D05 D15 D04 D14 D03 D13 D02 D12 D01 D11 VDDUT NC GND COM	8*GPI, 24V	1* 10PIN3.5mm pitch phoenix terminal
16		8*GPO, 24V	
17	TI4- TI4+ TI2- TI2+ TI1- TI1+	4* Light source and camera trigger input terminal	2* 4pin3.5mm pitch phoenix terminal
18			
19	VC4+ GND 12VOUT VC3+ GND 12VOUT VC2+ GND 485B VC1+ GND	4* Output camera trigger end	2* 8pin3.5mm pitch phoenix terminal
20		2*DC OUT12V,1*RS-485	
21	⏏	Grounding	M3*8 triple screw on ground hole mark
22	ANT	WiFi reserved antenna hole	Aperture Φ 6.5
23	CLM	To clear CMOS	
24	AT	Button on mode	Dial the code switch
25	ATX	Power on self-starting mode	

Recommended accessories:

- ◆ Video output cable: If the monitor is HDMI interface, it is recommended to use HDMI cable; If the display is VGA interface, you need to purchase separate HDMI to VGA cable for switching.
- ◆ Mounting groove: the whole machine rear fixed mounting plate, according to the size of the size of the installation can be designed according to the size of the installation groove.

Product size:



Interface Schematic Diagram:

